



PHARMA MACHINERIES



DRUM BLENDER

## **RIDDHI DRUM BLENDER** **GMP MODEL MACHINE**



- **BRIEF DESCRIPTION :**

1. Mixing, Homogenizing & Dyeing.
2. 5 Different Sizes.
3. 50 to 400 Litres mixing containers.
4. Various types of mixing blades available.
5. Batch Operation.
6. Wide range of additional equipment and special execution.
7. Optionally available variable speed.

- **ADVANTAGES :**

1. Intensive mixing even in the case of small quantities for example of additives or active substances.
2. Well suitable for small and frequently changing quantities of material.
3. Easy exchanging of the mixing container.
4. Easy cleaning of mixing container.

- **OPERATION :**

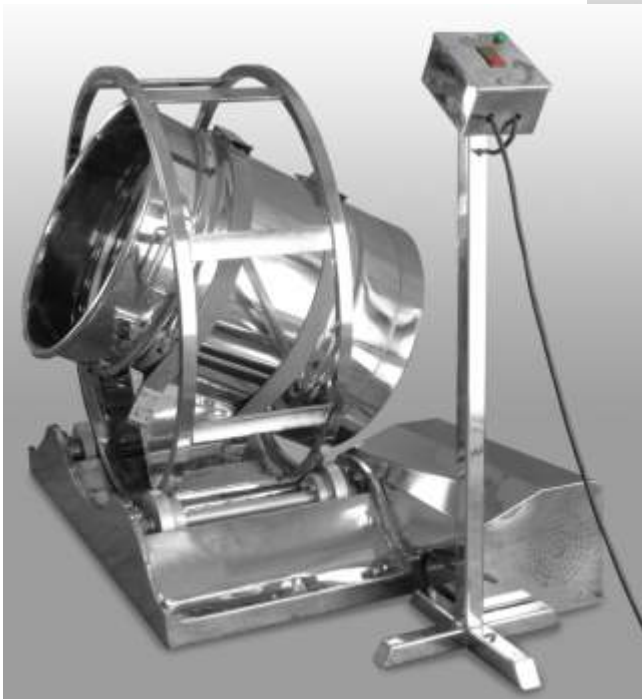
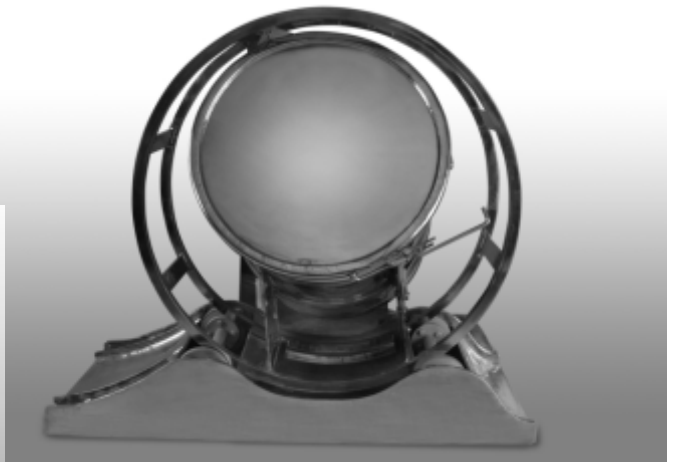
The container rotating around an inclined axis serves as a mixing tool. The rotating movement and the inclined arrangement of the container walls result in a mixing effect which is based on the combination of gravity and frictional forces. The particles are lifted and slide or fall back into the product to be mixed. This guarantees intensive mixing.

- **RANGE OF APPLICATIONS :**

Mixing, Homogenizing and dyeing of powdery or granulated components in the plastics processing, chemical, chemical-technical, food and luxury food industries, in pharmaceutical and dyes companies as well as in textile and leather factories.

- **STANDARD AVAILABLE MODELS :**

<b><u>Model No.</u></b>	<b><u>Gross Volume (Litres)</u></b>
1. RDDB – 50L	50L
2. RDDB – 100L	100L
3. RDDB – 200L	200L
4. RDDB – 300L	300L
5. RDDB – 400L	400L



## **RIDDHI PHARMA MACHINERY LTD.**

**Manufacturer & Exporters of Pharmaceutical Machineries**

**MUMBAI OFFICE:** Om-shivam soc., Tarun Bharat Bldg. No.2, Opp. Cigaratte Factory, Sahar Road, Andheri (East), Mumbai - 400 099. Maharashtra, India Tel.: +91-22-28321332 / 28382479 Mobile: +91- 9821018579

**Skype :** hiten.k.shah **Whatsapp :** 9821018579 / 9969994187 **Email:** [hkshah@riddhipharma.com](mailto:hkshah@riddhipharma.com)

**Web :** [www.riddhipharma.com](http://www.riddhipharma.com) / [www.riddhipharma.net](http://www.riddhipharma.net)

**REGD. OFFICE & FACTORY :** Riddhi Estate, Gulab Nagar, Opp. AEC, Amraiwadi, Ahmedabad - 380026. India.