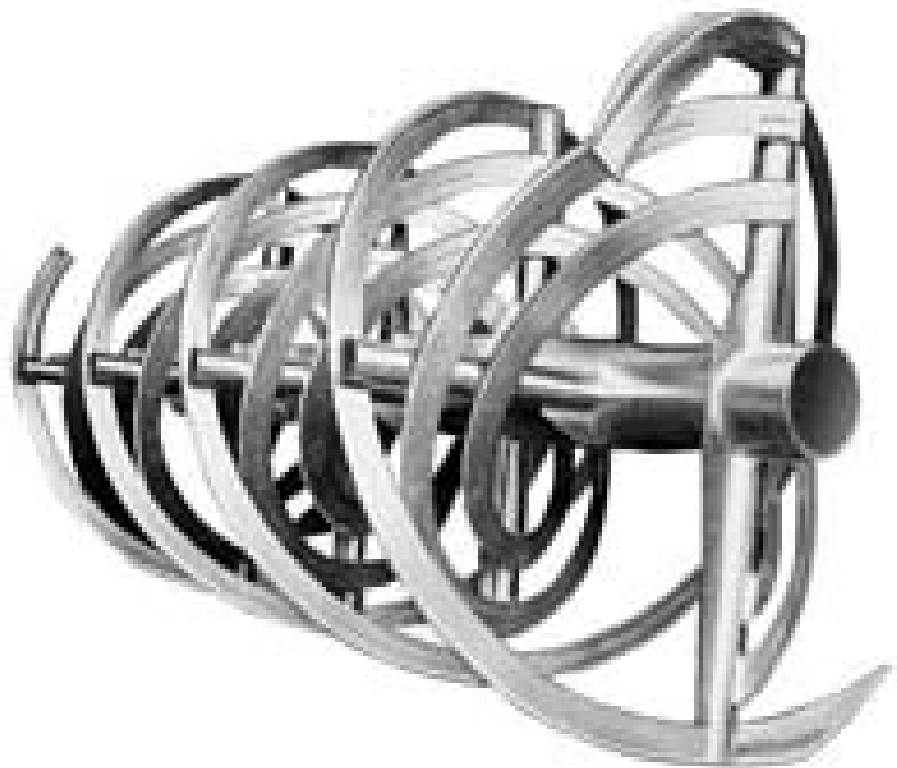


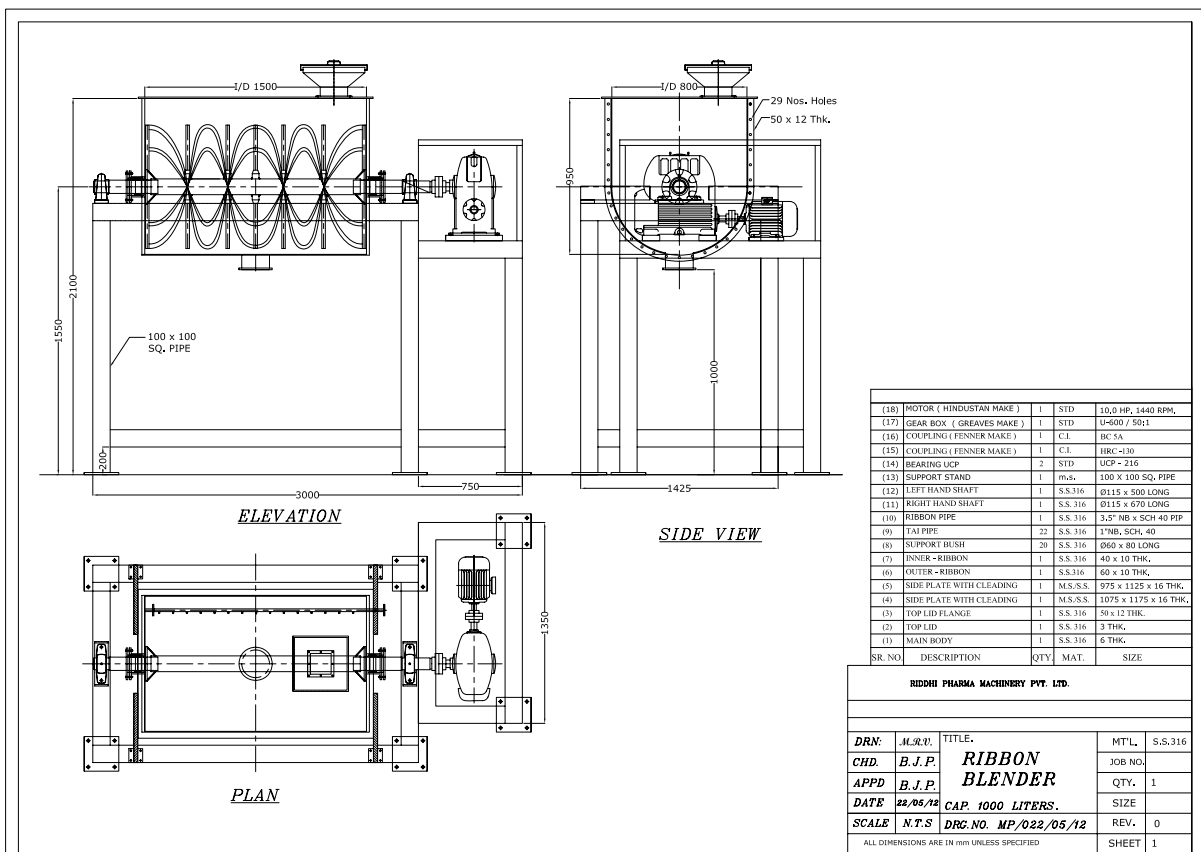


PHARMA MACHINERIES



RIBBON BLENDER







RIBBON BLENDER

TECHNICAL OFFER

Ribbon Blender's a light duty blender mainly used for easy to mix powder components which are preprocessed like dried granules, presieved powders etc. It is a low shear mixer and mostly used for solid/solid mixing. So solid / liquid mixing can also be achieved when high shearing force is not desired. It occupies less head room space for large volume mixing unlike Double Cone Blender , V Blenders etc.

Salient Features

- Available in two shapes
- U- for Low to Medium Volume capacity (Single shaft)
- W- for Large to Mega volume capacity (double shaft)
- Batch size based on 70% of Blender Volume
- Bearing mounted on lanterns out of Mixing zone to avoid contamination.
- Feeding through a charging port mounted on the top of the blender
- Reduced Material handling due to side discharge facility of processed materials.
- Preferred for lubrication of granules in large quantities.
- Dry Blending of capsule formulation.
- Mixing of Cosmetic powders.
- Capacity available 125 L to 5000 litres

Application

- Lubrication of dry granules in large quantity
- Dry Mixing of free flowing powders requiring low shearing force
- Dry blending of capsule formulation
- Mixing of cosmetic powders.



TECHNICALS SPECIFICATION

RIBBON BLENDER/ GMP

Model Model	RDRIB-1	RDRIB-2	RDRIB-3
Gross Capacity	150	500 ltrs.	1000 ltrs.
Working Capacity	125	400 ltrs.	800 ltrs.
HP	3/5hp	5/5hp	7.5/10hp
RPM	12 to 30	12 to 30	10 to 25
Blower Capacity	90 CFM	90 CFM	150 CFM
Heater KW	3.5	5.5	5.5
Blower Motor	0.33 HP	0.3 HP	1 HP
Elec	3 . A.C.	3 . A.C.	3 . A.C.

RIDDHI PHARMA MACHINERY LTD.

Manufacturer & Exporters of Pharmaceutical Machineries

MUMBAI OFFICE: Om-shivam soc., Tarun Bharat Bldg. No.2, Opp. Cigaratte Factory, Sahar Road, Andheri (East), Mumbai - 400 099. Maharashtra, India Tel.: +91-22-28321332 / 28382479 Mobile: +91- 9821018579

Skype : hiten.k.shah **Whatsapp :** 9821018579 / 9969994187 **Email:** hkshah@riddhipharma.com

Web : www.riddhipharma.com / www.riddhipharma.net

REGD. OFFICE & FACTORY : Riddhi Estate, Gulab Nagar, Opp. AEC, Amraiwadi, Ahmedabad - 380026. India.