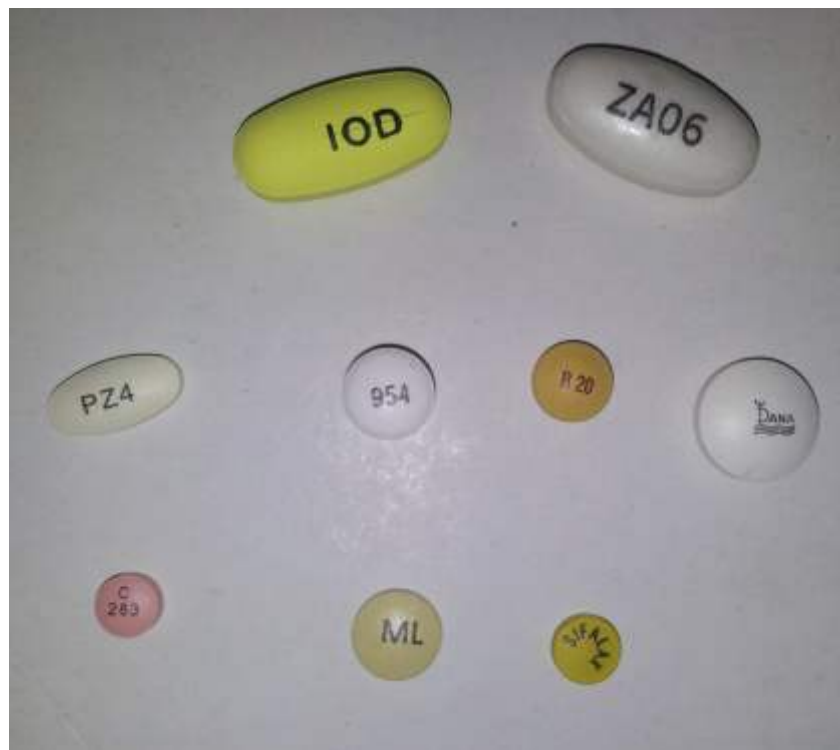




PHARMA MACHINERIES



TABLET / CAPSULE PRINTING MACHINE





Fully Automatic Tablet / Capsule Printing Machine RDCP-60/120/XL

Features:

- * Fully Automatic printing machine for capsule/tablet of any size.
- * 100% feeding gives higher output depending upon the size of capsule/tablet. smaller the size, higher the output
- * Prints on any shape-Round, Oval, Hexagonal, and Triangular etc.-Wax, Sugar or film coated tablets.
- * Provides sharp printing on both capsule and tablets.
- * Minimum air requirement 10 p.s.i to 75 p.s.i. only.
- * Imported pneumatic components used for better performance.
- * Hardened gears and shafts give longer life span.
- * A versatile, trouble free, easy to operate machine.

PRINT ON.....

- * Prints on two sides on a vast range of products.
- * Almost any size and shape like Round, Oval, Football, Pumpkin seed, Coffin, Triangular or Hexagonal tablets, Wax, Sugar and Film coated tablets, soft / Hard gelatin capsules Polished and Sealed compressed products all are handled on

RIDDHI Printers.

- * Edible Ink 45-50 Lakh/Kg. on continual usage.
- * IPA 20% of Edible Ink for Capsule.
- * IBA 20% of Edible Ink for Tablet.
- * Scrapper Blade - 48 HR Span/ Each. (May break on higher tighten).
- * Air Pressure Max. 75 psi.
- * Humidity: 40 Deg. - 50 Deg rh.
- * Air Condition: Required for sugar coated tablets / Capsules and Soft/Hard Gelatin Capsules.
- * Room/Space Required: 9'L x 9'W x 8'H
- * Lab models and CP-XL details available upon request.



OUTPUT

SIZE	RDGP-60/SHIFT	SIZE	RDGP-120/SHIFT
# 0	3,60,000	# 0	6,00,000
# 1	4,00,000	# 1	6,50,000
# 2	4,48,000	# 2	7,25,000
# 3	4,48,000	# 3	8,00,000
# 12-14 mm dia	5,66,000	# 11.5 mm	13,25,000
# 10-12 mm dia	6,40,000	# 9 mm	15,00,000
# 8 mm-10 mm dia	8,00,000	# 7 mm	16,50,000
# 5 mm	9,60,000		

TECHNICAL SPECS

MODEL	RDGP-60	RDGP-120
MACHINE	45" X 29" X 25"	49" X 33" X 25"
NET WEIGHT	400 KGS	350 KGS
GROSS WEIGHT	475 KGS	425 KGS
MACHINE STAND	29" X 35" X 31"	34" X 30" X 28"
NET WEIGHT	23 KGS	28 KGS
NOTE : THICKNESS OF TABLET NOT BELOW THAN 4 MM		
SPEC. ARE SUBJECT TO CHANGE WITHOUT PRIOR NOTICE		

RIDDHI PHARMA MACHINERY LTD.

Manufacturer & Exporters of Pharmaceutical Machineries

MUMBAI OFFICE: Om-shivam soc., Tarun Bharat Bldg. No.2, Opp. Cigaratte Factory, Sahar Road, Andheri (East), Mumbai - 400 099. Maharashtra, India Tel.: +91-22-28321332 / 28382479 Mobile: +91- 9821018579
Skype : hiten.k.shah **Whatsapp :** 9821018579 / 9969994187 **Email:** hkshah@riddhipharma.com

Web : www.riddhipharma.com / www.riddhipharma.net

REGD. OFFICE & FACTORY : Riddhi Estate, Gulab Nagar, Opp. AEC, Amraiwadi, Ahmedabad - 380026. India.